



Xcluder™ Roll-up Door Seal Installation

Use for Part #: 562688

Thank you for your purchase of Xcluder™ Roll-up Door Seals.

Tools Required:

- Electric drill and bits
- Screwdriver
- Sharp shears
- Clamps
- Hacksaw
- Wrench or socket driver
- Eye protection and work gloves

We recommend two people for this installation.

Questions?

Call Installation Support
(847) 495-4700 x112

1. Measure and record the width of the roll up door opening.
2. Cut the Xcluder Door “T” retainer(s) such that they are 1” shorter than the width measured in step 1.

NOTE: “T” brackets are shipped 8’ lengths. For doors wider than 8’, multiple brackets will be required. When using multiple brackets, cut the brackets such that they are equal in length.



“T” Retainer

3. Cut the Xcluder Roll Up Door Seal such that it is 4” - 5” longer than the door opening measured in step 1.

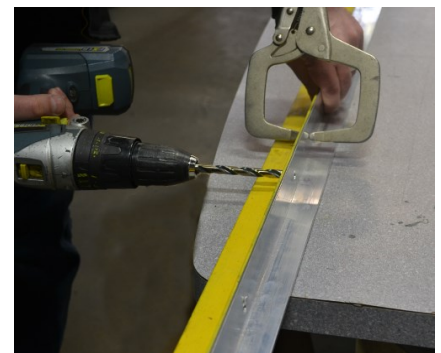


Xcluder® Roll-up Door Seal

4. Remove the bottom “L” brackets from the roll up door.



5. Center the Xcluder “T” retainer(s) on the removed “L” bracket with the “T” bracket flange snugly against the bottom of the “L” and clamp firmly in place.
6. Using the “L” bracket screw holes as a template, drill mounting holes through the Xcluder “T” retainer(s).



Version—BG1, 4-25-16



Xcluder™ Roll-up Door Seal Installation

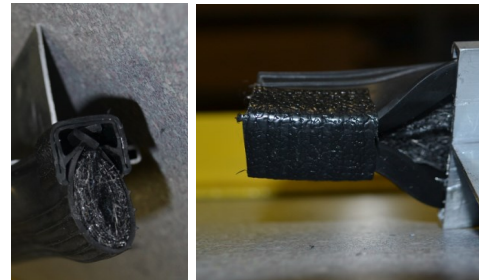
Use for Part #: 562688

7. Thread the Xcluder Roll Up Door Seal onto the “T” retainer(s). A properly cut and positioned seal will protrude about two to three inches from the “T” retainer on both ends.

NOTE: Silicon spray or soapy water as a lubricant will help the seal slide into the retainer more easily.



8. Install and crimp the end clips on to each end of the Xcluder Roll Up Door Seal.



9. Re-install “L” brackets with “T” retainer. The “T” retainer should be mounted on the outer side of the roll up door’s bottom bar. The outer “L” bracket is placed on top of the “T” retainer.



10. Fit the rubber portion of the Xcluder Roll Up Door Seal inside the roll up door guides.



Version—BG1, 4-25-16